

Using NECSD Launchpad Apps from Home

The following instructions are for using Launchpad from your desktop, laptop or tablet at home.

1. Type www.newburghschools.org
Select Families Tab at the Top
2. Click on Classlink Launchpad.
3. It will ask you to log in.



4. Log in using NECSD account:
Username :

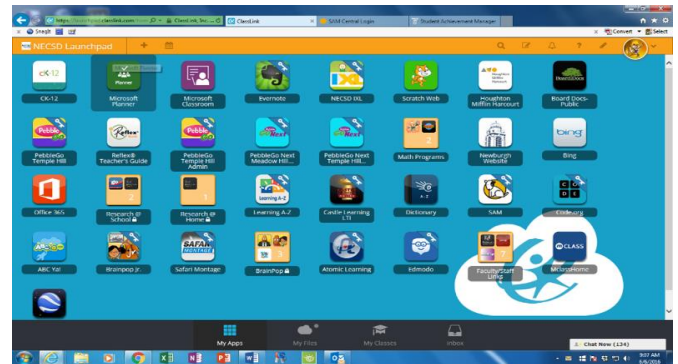
network login:

Select the App you want to use!



Sign in with your organizational account

Sign in



1. first initial + last initial + last 4 of student ID#
2. @students.necsd.net

Example:

Email: pw5422@students.necsd.net

PW: network login : pw5422